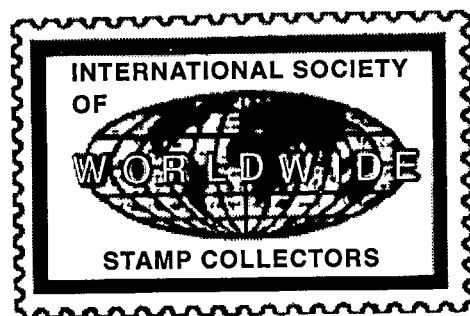


# The Circuit

May/June 2001 • Volume 19 No. 3



Affiliate of: APS (#153) & ATA (#89)

Current Membership: 609 Collectors Worldwide!

**The Official Journal of the International Society of Worldwide Stamp Collectors**

## Commentary on Commemoratives

**Submitted by Sue Hoover (#109)**

*Editor's note: Ms. Hoover has sent in this article that was printed in Postscript, newsletter of the Olympic Philatelic Society. Author's name was Tarry (sic.) Olson.*

Looking at a collection of commemorative stamps, one often wonders about the importance (or unimportance) of the commemoration. And some are among the most unattractive stamps ever issued. Postmaster General J. Edward Day's book recounts an especially amusing account. As the book is now out of print (and in case you missed it), I will retell the tale.

In 1948 the U.S. Post Office issued a stamp commemorating the 100th anniversary of the poultry industry. Question: Does that mean nobody raised and sold chickens before 1848?

Things have changed but in 1948, the post office was strictly under the control of Congress. Any group could secure the services of a lobbyist and have its desires presented to Congress. Not a national security or earthshaking issue, the issuance of a commemorative stamp didn't create great debates and such a bill usually passed. Even Harry Truman was not about to alienate some group with a veto.

Now for the funny part: As with all new issues, a suitable post office needed to be found for the cancellation of nearly half a million first-day covers. One was found: a tiny post office in remote Alaska. Its postmark was "Chicken, Alaska."

With typical diligence a postal inspector was sent to Chicken to make the necessary arrangements. There he discovered that



the post office was actually a couple of feet of counter space in the local grocery store. On the counter was a box of stamps; customers took what they wanted and left some money in return. There were some money order forms and a box for mail that arrived irregularly.

The inspector explained that great things were about to happen to Chicken. Many thousands of requests for first-day cancellations would soon be pouring in. Each cancellations would be done by hand so that it would be perfectly straight and not deface the stamps.

The postmaster listened, and when the inspector was finished, the postmaster picked up a sack, stuffed in the stamps, cash, money orders and the postmarker bearing the name "Chicken" and said to the inspector, "Here's your post office; I resign."

The FDCs were finally done at New Haven, CT — and there were 475,000 of them!

*Sue Hoover, an ISWSC member who resides in East Wenatchee, WA, adds this postscript:*

First-day covers are envelopes with the new stamp on it and are cancelled at the town or city chosen to introduce the new stamp. The next day the stamps can be sold in every other post office in the United States.

The chicken stamp was a brown 3¢ stamp depicting a Light Brahma hen, the oldest specialized chicken used in America.

On the map of Alaska, Chicken is due west from Dawson City, Yukon — not too far from the border. A road runs between these two towns, but the road is closed in the winter.

Spokane had the first-day cover for the 1999 stamp showing just running legs. That's because of our well-known Bloomsday Race in June.



**OFFICERS, MANAGERS & SERVICE CONTACTS**

**President & Executive Director:** Anthony Zollo, MD (#856), PO Box 150407 Lufkin, TX 75915-0407 USA, zolloam@lcc.net

**Immediate Past President (and Board Member):** Tom Fortunato (#379) 42 Maynard St. Rochester NY USA 14615-2022 stampctmf@frontiernet.net

**Secretary/Treasurer:** Dalene Thomas (#101), 8612 W. Warren Ln., Lakewood CO 80227-2352 USA, dalene1@uswest.net

**Vice President for Charitable Services:** Mike Crump (#2126), P.O. Box 57, Yorba Linda, CA 92885-0057, StampGuy47@aol.com

**Vice President for Public Relations:** Dave Nelson (#25—Past President) 200 Prospect St., Petaluma, CA 94952 USA, garcianelson@home.com

**ISWSC Board:** Dave Creson (#170) 6501 Pebble Dr, Pensacola, FL 32505, USA creson@freenet.com

**ISWSC Board:** Joan Roderick (#669), 12 Red Oak Road, Asheville, NC 28804 USA, jnrderick@earthlink.net

**ISWSC Board:** Ken Costilow (#142), Virginia Beach, VA USA, kcos32@home.com

**ISWSC Board and Canadian Secretary:** William Silvester (#1058) 378C Cotlow Road, Victoria, BC V9C 2G1 Canada, wsilvester-iswsc@home.com

**AUCTION**

**Manager:** Everett King (#1389) PO Box 127, Whitethorn, CA 94586 USA, stamps@whitethorn.com; 707/986-7230

**SALES CIRCUIT**

**Manager (US):** James M. Gaul (#1853), 1920 Fawn Lane, Hellertown, PA 18055 USA, terryjnjim@enter.net

**OMNI CIRCUIT**

**Manager** Jerry Foster (#965) P.O. Box 7426, North Augusta, SC 29861-7462 USA jrf121336@aol.com

**Co-Managers:** David Paul (#59), 2 Heritage Drive, Belchertown, MA 01007 USA, and James Millette (#1314), 8901 Marcel Cadieux (#202), Montreal, PQ H2M 2L9 CANADA

**SWAP CIRCUIT**

**Coordinator:** Randy Smith (#1111), PO Box 21115, Eagan, MN 55121-0115 rasmory4@earthlink.net

**SWAP CIRCUIT MANAGERS**

(according to the first initial your last name)

**A—I:** Scott Sadger (#882), 2140 Miller Road, Buchanan, MI 49107

**J—Z:** Jack Searles (#982), 733 Front Street, Olean, NY 14760-2851

**Super Circuit:** Randy Smith (#1111), PO Box 21115, Eagan, MN 55121-0115 rasmory4@earthlink.net

**CTO Circuits:** William Silvester (#1058), 378C Cotlow Road, Victoria, BC V9C 2G1 Canada wsilvester-iswsc@home.com

**Small (Definitives) Circuit:** Kenneth Wills (#2150), 5308 Shadow Glen Dr., Grapevine TX 76051-7350, wills@airmail.net

**NEWSLETTER EDITOR**

**This issue:** Marian MacLeod

**Future issues:** Jennifer Arnold, 310 NW Juniper Lane, Albany OR 97321-1430. 541•967-7043; Fax 541•967-9515; pizzazz@cmug.com

*Phone or send your questions to the appropriate volunteer. Please include a self-addressed stamped envelope or an IRC for a reply.*



*Please remember that the Editor does not mail out the Circuits. If you have any questions about your Circuit mail service, please contact Tom Fortunato or Tony Zollo. Thank you!*



**DEADLINE FOR NEXT ISSUE: MAY 20, 2001**

**President's Column**

**by Tony Zollo (#856), President and Executive Director, ISWSC**

In case you haven't noticed, several transitions in ISWSC program management have taken place. Jim Gaul (#1853) assumed the reins as manager of the Sales Circuit. Jerry Foster (#965) has fully assumed management of the OMNI Exchange. Their contact information is listed on page 2 and they should be contacted rather than the old managers.

Also, after several years of professional service, our editor for this newsletter, Marian MacLeod, is stepping down. This is her last issue and I want to thank her for a job well done. Our newsletter has never been better! We all wish her and her husband Jon (ISWSC member #1286) a very healthy and happy retirement!

We have recruited a new editor, Jennifer Arnold, who will begin with the next issue. Jennifer has extensive experience editing other philatelic newsletter and is active in the Junior Philatelists of America. Her contact information is listed on this page and all correspondence, articles and advertisements should now be sent to her.

I would like to take this opportunity to remind all members of our current dues policy. In June 2000 your board voted to increase the annual dues from \$10 to \$12 per year. At the same time, all late charges were revoked and a \$2 discount was offered for all renewals received at least one month prior to the expiration date (which is the last day of the odd numbered month shown on your membership card and above your address on

**See President's Column, page 8.**

**REGIONAL SECRETARIES**

*(Represent the ISWSC, distribute stamps to youth programs in their region.)*

**Australasia**

Andrew McEachern (#1755)

Suite 3333, 236 Hyperdome Loganholme 4219, AUSTRALIA

Tel # 61-7-32083720

valerieandrewhenry@bigpond.com.au

**Canada**

William Silvester (#1058)

378C Cotlow Road

Victoria BC V9C 2G1 Canada

wsilvester-iswsc@home.com

**Eastern Europe**

Jan Szyrka (#539)

ul. Srebrna 29

PL-44121 Gliwice Poland

szpyrka@zeus.polsl.gliwice.pl

**Western Europe**

(Position temporarily vacant)

**British Isles**

Chad Neighbor (#510)

28 Relugas Place

Edinburgh EH9 2PY

Scotland, UK

cneighbor@scotsman.com

**Cuba**

Adrian Portuondo (#952)

Apartado 9009

Santiago 90900, Cuba

**Scandinavia/Baltics**

Martti Vihanto (#830)

PO Box 34

FIN-20521

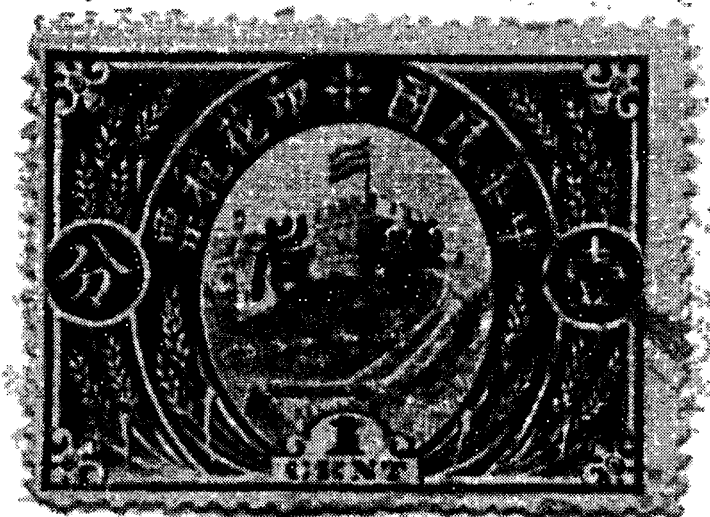
Turku, Finland

# ¿Whatzits?

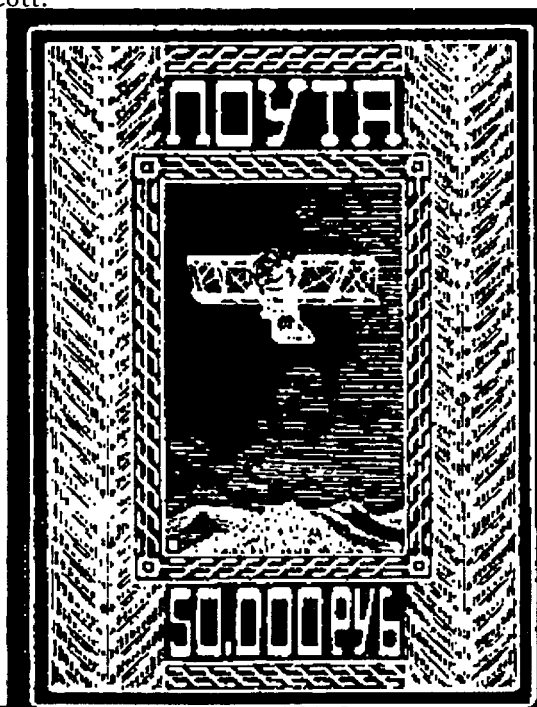
by Robert McKenzie (#1055)

**H**ere's another whatzit for you. The stamp is a very common Chinese revenue (or something non-postal). The black overprint is strange to me — doesn't look like any Chinese characters I've ever seen.

I've asked my daughter-in-law, who is Chinese, if she can recognize them. No luck.



And here's a new ¿Whatzit?. The scanner didn't do justice to the color, which is ultramarine, so I attach a black & white .bmp file. I haven't the slightest idea what it is, or where I got it. Looks like Armenia, but it's not in Scott:



## Dues/Advertising Policy

### Dues Information:

Single/Dealer/Club membership, \$12\*

Youth membership (under 18), \$10\*

Family membership (up to 4 persons in one residence), \$19\*

\*=plus 250 large commemoratives for the Youth Program or equiv. donation in US \$. Dues above are for one year and include six newsletters per year. You may sign up for three years at a time. For an application or further information send SASE or IRC to: ISWSC, PO Box 150407 Lufkin, TX 75915-0407 USA. *There will be a \$2 per year discount if the renewal is received at least 1 month prior to the current expiration date.*

### Advertising Policy:

For reasons of accountability, only members of the ISWSC, APS or ASDA may place ads. All ads dealing with philatelic concerns are acceptable. We reserve the right to edit out objectionable language. Advertisers are expected to respond to all inquiries, so be sure you can handle the responses before you offer to trade, buy or sell. If you have a bad result from answering an ad, contact the editor. We will try to resolve the conflict.

### Display Rates (Camera Ready)\* per insertion:

Full page, \$75\*\*; Half page, \$40\*\*; Quarter page, \$20\*\*; Per column inch, \$5. Six repeat insertions of the same ad for the cost of five ads (one free). We will also offer a two-sided insertion for \$125 per issue. \*Camera Ready means ready to paste up or scan and print. Reductions and typesetting extra. \*\*Discounts for three or more insertions of same ad. Yearly display rates available. Write to ISWSC past president Tom Fortunato (see P. 2) for special rates.

### Classified Rates per insertion:

First 30 words, including name, address, and zip code are \$3. Additional words are 20 for \$1. NOTE: State abbreviations = one word. "PO Box 12345" = two words. Zip code = one word.

Make all checks payable to ISWSC in U.S. funds. Send text and payment for ads to the Editor. All addresses can be found on page 2.

# AUCTION 23

## Closing August 20, 2001

Lot Number	Lot Description	Catalog Value	Minimum Bid
1	USA 332 mixed on paper U. 35% recent commems, incl 18 baseball & century, 4 \$ values. 25% multiples		
2	USA 158 cover, bicentennial, stamp shows, scouting, military, airport & post office dedications, ships, remembering our POW-MIAs, souvenir cards and more.		10
3	USA Mixture: 17 pounds of stamps on & off paper, regular issues, coils, from 1965 to present. HBO		10
4	USA. Mixture: 6 pounds of Christmas, regular issues, coils, 1965 to present. HBO		9
5	USA. Inauguration Covers. 1973-1996, Nixon, Carter, Mondale, Reagan, Bush, Quayle, Clinton, Gore, and Presidential Debate pmk. est \$83.75.		25
6	USA. 3 special cancels for the visit of Pope John Paul II to Guam, Anchorage, and Pontiac, MI. Unaddressed		2
7	USA. 3 FDCs for America's independence. Bolivia Sc #583, Luxemburg Sc# 587, St Vincent, Philatelic/Numismatic		2
8	USA. 10 blocks, PBX, Zip, etc. 1176/C85 in retired APS sales book. CV \$2.75		4
9	USA. Post Office Poster of Balloons issue, 1983, Sc# 2032-35, 21"x14", folded.		3
10	USA. Post Office Poster of Horses issue, 1986, Sc# 2155-58, 21" x 14", folded.		3
11	USA. Post Office Poster "It's Duck Season", Daffy Duck Issue, 16" x 11", heavy plastic.		4
12	USA. Post Office Poster of Dogs issue, 1984, Sc# 2098-2101, 21" x 14", folded.		3
13	USA. Post Office Poster of Lacemaking Issue, 1987, Sc #2231-4, 36" x 24", folded		3
14	Albania/Bulgaria. Retired APS sales book, mostly M, \$59+ left in book.		30
15	Australia & Area. Over 1300 diff M & U stamps from Australia. Over 150 M & U from ATT, Christmas Island Cocos Island. In stock book. Better singles & sets CV \$400+, common ignored. Great start for a collection.	400+	40
16	Belgium. Small collection of earlies and semi postals in stock album, includes B208, B317, B318, B303.	305	60
17	Benelux. APS retired sales book, good run of Luxemburg, \$38+ left in book.		15
18	Canada. 100 dif U stamps from 1996-2000, includes \$1 Loon, \$2 Polar Bear, \$8 Grizzly, rest commems, lite CDS.		20
19	Canada. S/S 1604, 1515, 1616, 1621a, 1709, 1760b, all MNH.		25
20	China/Rep. of China. 15 covers, mixed conditions, 1940s & 50s, Multiple stamps on m ny, several from Columbia films to Columbia pictures.		5
21	Costa Rica. Selection of mostly older U stamps in OMNI book. 98 CV \$78.80		
22.	Cuba. Nice selection of several dozen MUH sets and singles in multiple of 4 or more, nice topicals, sent to pay dues. Listed without values in Scott.		10
23	Belgium. #4 on cover. Rotterdam pmk 6/7/1867, nice . 1959 Europa cover, Netherlands, Swiss post care.	18	5
24	Norway Bank Mix. Mostly Norway, includes hi values from West Europe, Scandinavia, others. on paper. est CV \$500		30
25	Germany, Austria, France, Belgium. Selection in 3 OMNI books. Some older, mostly recent U. Various cats. \$110		
26	Western Europe. Mostly Germany, some Scandinavia. 40% value in modern commems, 60% value in small-med, mostly \$1 and over values. Est CV \$1000.		42
27	Finland. Bklt & S/S 863, 933, 939, and new Tommi AMakinen sheet of 2 all MNH.		17
28	Fujeira. 80 copies of Churchill Souvenir sheet, stamps of 2 values. Scott unlisted.		8
29	Germany. Modern commems mounted in OMNI book, some Austria included. CV \$97	97	
30	Germany. Modern commems mounted in OMNI book. CV \$52.	52	8
31	Germany. 28 fan mail covers to American Actress Helen Schneider at the Rhein-Main Theater. Mostly recent commems & pictorials, some interesting pmks, comments, condition mixed.		7.50

Lot Number	Lot Description	Catalog Value	Minimum Bid
32	Great Britain. Golden Wedding Anivers. FDC, addressed, #1781-84, est value \$10		
33	Haiti. Selection of older to new U stamps in OMNI book. 94 CV \$75+.		
34	Hungary. 388 M&U mostly dif stamps, mainly 1881-1941, remainders on album pages, including 487-91, B126-30, no CTO's.	102+	
35	Iceland. Collection on stock sheets and album pages, M&U, 35/547.	110	25
36	Iceland. 200 diff stamps, includes most super hi values, 1984-91		22
37	Iceland. Selection of U stamps in a glassine est CV \$100.		12
38	Italy. 1940s dealer stock and exchange, low values, commems & Pictorials, many 100s, over 65 issues		7.50
39	Japan. On paper mix. Many commems, 70% \$1 and ovr small-med, est CV \$1000.		40
40	Japan. 200 diff modern commems plus few very hi value small.		17
41	Japan. 100 diff modern commems plus a few very hi value small.		9
42	Japanese Postage Stamp Catalog. Japan Dealer's Assoc. 1970, in Japanese. HBO		1
43	Japan. Selection of U early and to 1960s stamps. 95 CV \$57.		
44	Latin America. 3 retired APS sales books, with additional pages added, about \$49 left. Some good Mexico.		20
45	Madagascar. 896-1943. Stockbook of mostly M, many dupes. 28/251, including 28-9, 38(11), 48(2).	250	60
46	Madagascar. 1943-. Stockbook of mostly M, many dupes with values to \$2.25. 252/542 including B1, B19, C1/C144, J8/18.	175	40
47	Mauratania. Stock binder, mostly M collection and stock #1/330, many dupes.	545	125
48	Mauratania. Stock binder, mostly M BOB, semipostals, airs, dues, officials, many dupes.	120	40
49	Mexico. Sheet of 50 TB stamps, 1961-2, showing birds of Mexico, description sheet, Great topical.		5
50	Mexico. Retired APS sales book. \$42+ left in book, nice older material.		20
51	New Zealand. Stockbook of M&U issues from 286/413. Many dupes, better incl 296-8, 298A, 315 325, 351, 353, 355, 356-7, 360 and numerous gutter pairs.	470+	100
52	Philippines. Selection of U stamps in OMNI book, all eras. 98 CV \$46		
53	Romania. 945 M&U stamps, all eras, 1869-1994. Thru 1940 with dupes, rest mostly diff.	240	25
54	Spain. 1737 stamps M&U, nearly all diff, remainders on album pages, incl BOB. Earlies incl Goya 386-402 MH, Majority 1940's thru 1985. Most with cat IDs. Plus 205 diff colonies.	405	40
55	USSR. 320+ U stamps lay out in new 16 page stockbook, all issued before 1970.		35
56	Vatican. Collection on album pages of 191 mostly M stamps, several complete sets, values to \$3 on sets.	35	10
57	Venezuela. Recent issues 1997-98, MNH (S/S & regular issues) Face Bolivar 15,770, est CV \$65.		14
58	Venezuela. 5 FDCs unaddressed celebrating 50 years of the state of Israel, Est value \$20.		
59	Venezuela. 1998 issues, S/S & stamps, MNH, Bolivar value 62,570. Est CV \$250.		40
60	World. Worldwide 1000 diff, many \$1 value and up, off paper.		11
61	World. Box of 130+ glassines, cards, etc. with sets, part sets & selections of stamps, several 100s, good pickings.		15
62	World. Worldwide selection of modern U stamps from all over in 9 OMNI books, various cats \$583		
63	World. 436 diff M&U mostly BOB, dues, officials, etc. on Int'l pages, P-Z countries, strong in Portugal, Switzerland, Tunisia, Turkey, Uruguay, Wuttenburg. All pre 1940.	158	25
64	World. British Common wealth. Mostly modern U stamps in 6 OMNI books, various cats \$350		
65	World. Worldwide accumulation in 70+ glassines, many 100s, many older, basic values, great filler lot.		20

Lot Number	Lot Description	Catalog Value	Minimum Bid
66	<b>World.</b> Worldwide packet of sales cards and glassines, with M&U sets and singles from all over, all eras. Priced on cards at over \$65, appear to be priced at about 50% of current CV.		20
67	<b>World.</b> Worldwide packet of sales cards and glassines, with M&U sheets and singles from all over and all eras. Priced on cards at \$4760, appears to be priced at about 30% of current CV.		15
68	<b>World.</b> A 3/4 inch pile of loose mixed album pages, stock sheets, etc. Stamps throughout, several 100s, many older stamps. Lots of fun.		
69	<b>Worldwide</b> selection of U stamps from all eras in 7 OMNI books, strong in Europe, some Africa, Asia and Latin America. Various cats CV \$374		
70	<b>Worldwide Mixture.</b> 3 pounds of stamps from all over the world, mostly off paper in glassine envelopes, espec. dups, 35 years plus accumulation. HBO.		10
71	<b>Album.</b> The American Album for US Postage Stamps, Scott 1949 ed., some crystal mounts and hinges used, some pages have stamp pictures cut out. In Good condition. The American Album for US Postage Stamps Scott 1936 ed. no stamps.		5
72	<b>Album.</b> The International Postage Stamp Album, Part I, 1840-Mid 1940, c1947, excellent condition, no stamps, crystal mounts and hinges have been used. HBO.		15
73	<b>Album.</b> Scott Specialty album, green #3, 2 post, excellent condition. Specialty pages for Belgium Congo & E Africa to 1960, Luxemburg to 1966. Incl BOB & S/S pages. Pages in excellent condition. Retail approx \$73		30
74	<b>Catalog.</b> Scott Standard Cats. 1949, 1969 Vol. 1 & 2 (Vol 2 has a slight tear at top of binding), 1980 set of 4. HBO		10
75	<b>1992 Scott Catalog</b> Vol. 1 (US, UN, Canada, British) good condition. HBO		
76	<b>1992 Scott Catalog</b> Vol. 1 (US, UN, Canada, British) good condition, covers intact. HBO		5
77	<b>1992 Scott Catalog</b> Vol 2 (A-F), good condition, covers intact. HBO		5
78	<b>1992 Scott Catalog</b> Vol 3 (G-O), good condition covers intact. HBO		5
79	<b>1995 Scott Catalog</b> Vol 1 (US, UN, Canada, GB, British Commonw), good condition, covers intact, HBO		5
80	<b>1995 Scott Catalog</b> Vol 2 (A-C) good condition, covers intact, HBO.		5

### AUCTION RULES AND INFORMATION

1. Bid increments: \$1-5 = .5, \$5-10 = .5, \$10-30 = 1.00, \$3-100 = 2.00, Over \$100 = 5.00. Bid in these increments only. Odd amounts will be lowered to the next increment.
2. High bidder wins at one advance over second-highest bidder.
3. If there are tie bids, the earliest postmark wins.
4. If only one bid is received, lot goes at the minimum bid listed by the owner.
5. State the highest you are willing to pay. Your high bid will be used only if necessary. No "buy" bids or requests for percentage increases will be accepted.
6. Lots are returnable for items mis-described or mis-identified. No returns on large lots or collections, etc.
7. The Auctioneer reserves the right to decline unreasonably low bids.
8. Lot information will be sent to successful bidders with invoice. Invoice will include postage. Payment is expected in U.S. funds within 10 days.
9. Lots will be shipped and billed by Everett M. King and payment should be sent to him at the address on the invoice.

#### Centering and Condition:

VF = very fine, wide margins  
 F = Fine, off center, but perfs do not touch design  
 VG = Very Good, perfs touch design  
 G = Good, perfs cut into design  
 U = Used  
 M = Mint  
 MNH = Mint never hinged  
 MLH = Mint light hinged  
 MH = Mint hinged  
 HH = heavy hinged  
 HR = hinge remnant

#### Other Abbreviations Used:

FDC = First Day Cover  
 OCV = Owner's Catalog Value  
 1/6 = not all numbers included  
 LC = light cancel  
 HV = high value  
 MGN = margin  
 BKLT = booklet  
 SE = straight edge  
 PNC = plate number coil  
 CVR = cover  
 SM = small  
 ADD = addressed  
 DUPES = duplicates  
 UN BKLT = unexploded booklet  
 CV = latest Scott Catalog value  
 HBO = held by owner

DG = disturbed gum  
 HC = heavy cancel  
 EST = estimated  
 WTK = watermark  
 DON = donation lot  
 CR = crease  
 LG = large  
 ENV = envelope  
 SEP = separated  
 S/S = souvenir sheet  
 1-6 = all numbers inclusive  
 SON = socked on nose cancel  
 CDS = circular date stamp  
 NG = no gum  
 BLK = block  
 w/ = with  
 PEN = pen/pencil notations

TH = thin  
 EX = except  
 OVPTS = overprints  
 EA = each  
 AVG = average  
 + = plus  
 & = and  
 CPL = complete  
 DIF = different  
 INCL = include (s) (ed)  
 COMEMS = commemorative  
 UNCIRC = uncirculated  
 ID = identification (Cat #)  
 RET = retired, returned  
 KG = King George  
 QV = Queen Victoria  
 QE = Queen Elizabeth

Lot Number	Lot Description	Catalog Value	Minimum Bid
81	1995 Scott Catalog Vol 3 (D-I) good condition, covers intact, HBO.		5
82	1995 Scott Catalog Vol 4 (J-Q) good condition, covers intact, HBO.		5
83	1995 Scott Catalog Vol 5 (R-Z) good condition, covers intact, HBO.		5
84	1996 Scott Catalog Vol 1B, British Commonwealth, fair condition.		
85	1997 Scott Catalog set of 6 Volumes 1A, 1B, 2, 3, 4, 5, good condition.		30
86	Bulletins. 52 Post Office bulletins of New Issues, 1965-1976.		5
87	Harris Reference Catalog of Postage Stamp Prices for US, UN, Canada, 1964, 1976, 1979 excellent condition. HBO		2
88	Book. How to Collect Stamps, Coins, and Paper Money; by Erwin J. Felix, c 1954, by Popular Mechanics. HBO		2
89	Books. The Postal Service Guide to US Postage Stamps, 1979, 1982, 1986. HBO		3
90	Book. Stamp Collecting: The Complete, Easy, Guide to the World's Most Popular Hobby, c 1992, Dell Publishing, HBO		2
91	Miscellaneous: Boxed deck of playing cards, depicting Trans. Miss. "Cattle in Storm", produced by Lambert W. Gerber, of Tamaqua, PA; philatelic auctioneer, Tax stamp on box. An interesting philatelic Item.		25

George Land has retired from working on the auction after 12 years. THANK YOU, George, for all the hard work you have done over the years keeping the auction going. You will be missed.

To obtain forms and submit lots to the auction, any questions about the auction, and submitting bids, contact:

Everett M. King  
P O Box 127  
Whitethorn, CA 95589-0127

Phone: 707-986-7230

email: stamps@whitethorn.com (bids may be emailed, pdf forms can be sent to you via email)

Web: <http://www.whitethorn.com> (Will be updated with auction information, pdf forms available for downloading)

AUCTION # 21 BID SHEET										Notes or Instructions
please print clearly or attach an address label										
Name Address								ISWSC Membership Number		
Country										
Lot #	Bid	Lot #	Bid	Lot #	Bid	Lot #	Bid	Lot #	Bid	
Mail Bids To: Everett M. King; P O Box 127; Whitethorn, CA 95589-0127										

# New Circuit Editor Greets Members

by Jennifer Arnold

I am so looking forward to working with the ISWSC! I have received a warm welcome from several members already. Thank you!

Even though I have had over ten years experience working with stamp publications, it feels like a whole new adventure starting work on *The Circuit*. I will need to learn the dynamics of your organization and find my place in the scheme of things.

As you must already know, each editor has his/her own way of organizing a publication. I tend to be pretty relaxed about things, but do my best to catch glaring errors and typos before the pages are printed. *The Circuit* is your newsletter, so I will do what I can to make sure that the information you want will be included in each issue.

I like to be flexible as far as receiving copy is concerned. You are welcome to send articles any way that is convenient to your schedule. If you prefer to send email, "snail" mail or faxes, I can easily accommodate you.

I work on Macintosh computers, but can translate most PC programs. If you have a question about what format would be best to email me, just ask. With such a diverse group of stamp collectors, I look forward to the many interesting articles I will be receiving for publication in *The Circuit*!

Please feel free to contact me if you have any ideas, suggestions, questions, comments, etc. I will do what I can to make your publication what you want it to be. Jennifer Arnold 310 NW Juniper Lane, Albany OR 97321-1430 Ph: 541-967-7043 Fax: 541-967-9515. Email: pizzazz@cmug.com



# Retiring Editor Says Farewell

by Marian MacLeod

As this issue goes to the printer, I say "goodbye" and "thank you" to all the fine ISWSC members who have sent articles and encouragement to me through the years. I'm sorry to be leaving you, but now I'll have more time to visit our children and grandchildren! My husband is an ISWSC member so we'll see some of you at regional and national stamp meetings, I'm sure. It has been a great experience working with you.



# Interesting Ideas

by W.T. Kiepura (#503)

Need an idea for a new collection? Try making a miniature block of nine of the flat plate issues of the U.S. This requires a guide line on one side of the stamp, and for the four corners a guide line on two adjacent sides, with a fully-perforated stamp in the center.

Think it's easy? I have been trying for years, and have yet to complete one block! Guide line stamps are getting hard to find, but they do show up in old collections.



Are you missing some valuable current stamps? Try getting the U.S. coil stamps with plate numbers. I just checked a batch of covers and it took 33 for the first plate number to turn up.

A recent price list in a leading magazine seemed to indicate that each one is worth \$1. If you do not get much junk mail, ask your friends to save theirs for you.

And while you are at it, why not save the metered mail covers? There are many who collect this area, and you might have some good trading material — if you can locate the collectors who want it.



## President's column, concluded:

the envelope used to mail all issues of this newsletter). So, if you renew ahead, which saves the ISWSC money and its volunteers' time, you can still be a member for only \$10 per year! And, you can renew up to three years ahead at that rate. What a bargain!

In the January/February issue of this newsletter I made the following request:

*One supply that worldwide collectors use a great deal of is hinges. Yet it seems almost impossible to find a truly removable/peelable the lowly stamp hinge. In the past, hinges such as those made by the now defunct "Dennison" company were outstanding, yet the recipe seems to have been lost by all present-day manufacturers. I would like to request that any member who has found a suitable, peelable hinge share that information with me so that I may be able to share it with all members. If you could send me an empty envelope from your favorite brand and maybe a sample of a dozen unused hinges, I will run a "scientific" experiment and report on the results for the benefit of all members.*

I did not receive any replies to this request. I would still like to perform this experiment and so I will repeat it. Please send me a sample of a dozen unused hinges as well as either the outer wrapping, a photocopy of the wrapping or just the name of the hinges and manufacturer on a piece of paper. I will publish the results, for all our benefit, in an upcoming issue.

Till next time...





# Death for Mail Robbery?

Submitted by Sue Hoover (#109)

(Reprinted from *Postscript*, the newsletter of the Olympia (WA) Philatelic Society, May-June 2000)

As late as 1872, a person convicted of robbing a mail carrier could be punished by death. The death penalty for stealing mail was first imposed by an Act of Congress on February 20, 1792. That act also included, for the first time, a fine for obstructing or retarding the passage of mail.

In 1794, Congress amended the law to impose the death penalty only in cases where an individual had robbed a mail carrier. Penalties for stealing mail were reduced to fines not exceeding \$300 or imprisonment, depending on the circumstances.

In 1799, the penalty for robbery of mail was changed to a public whipping of no more than 40 lashes and an imprisonment not to exceed 10 years for first-time

offenders. A second offense, however, was still punishable by death.

In addition, the death penalty was imposed on anyone who wounded the person having custody of the mail, or who put the carrier's life in jeopardy by the use of dangerous weapons.

In 1810 the whipping penalty for first offenders was removed, although the offender was still subject to up to 10 years in prison.

These provisions continued in force until an Act of Congress of June 8, 1872, reduced penalties for second-time offenders, and the wounding or endangering of carriers by the use of weapons to a life of imprisonment at hard labor. (*Boeing Employees Stamp Club Newsletter*)



## An Apology, A Reorganization

by Randy Smith (#1111)

I have been serving as the ISWSC Swap Circuit Coordinator and as a manager of the G-M Regular swap circuit. I wish to apologize to those of you who have sent in your 2001 Swap Circuit fees and to the current members of the G-M Regular swap circuit.

Since the holidays, I have been averaging 50-60 hours of work per week. Between this, family responsibilities, and other volunteer obligations, I have had very little time to devote to the Swap Circuit program. Unfortunately, this resulted in a delay in processing 2001 circuit fees and in sending out G-M Regular circuits. The good news (at least to me!) is that my work is now settling down and some of my other volunteer work has ended. This has enabled me to refocus my attention on the Swap Circuit.

My first order of business was to review the fees sent in to date and to send each circuit manager his new roster. This has now been done and you should now be receiving the number and type of circuits you requested when you paid your 2001 Swap Circuit fees.

In preparing the Regular circuit rosters, I noticed a significant decrease in the number of participants. This is most likely due to the creation of the Super Circuit (200 stamps per circuit, instead of 100 stamps), as the total number of program participants has remained stable. In order to combat this reduction of Regular circuit members, and to prevent future delays on my part in sending out circuits, I have reassigned all G-M Regular circuit members to the other two circuit managers - Scott

Sadger and Jack Searles. Scott will now serve members with last names beginning with A-I and Jack will serve those with last names beginning with J-Z. Members living outside the USA and USA members requesting more than four circuits per month may receive circuits from both managers in order to balance the membership.

While I will no longer be managing a Regular circuit, I will be continuing as manager of the Super Circuit and as coordinator of the Swap Circuit program. As time allows, I will be introducing a new circuit type, similar to the "bonus" circuit previously offered to G-M Regular circuit members.

To ease the transition of G-M Regular circuit members to Scott and Jack, I have resumed sending out existing G-M circuits. These circuits will continue until each circuit has made its full rounds (i.e. each member on the circuit has been in each position on the circuit). By the time the G-M circuits are done, the other managers will be sending out the number of circuits each member requested when paying 2001 Swap Circuit fees.

Again, please accept my apology for the slow service you have received from me over the past few months. The delay in sending G-M circuits and in starting/renewing your service is entirely my fault, and not that of any of the other managers or members of the program. I believe the changes described above will help prevent future delays. I pledge to do all I can to regain your trust and to restore your satisfaction with the Swap Circuit program.



# New VP for Charitable Programs

by Mike Crump (#2126)

**H**ow did a faceless 53-year-old government functionary end up as the Vice-President for Charitable Programs? "I guess that you should be careful what you wish for, because you might get it," according to my stamp pal, "The Jake".

I started collecting U.S. as a high-schooler, dutifully purchasing plate blocks from the Gimbel's Department Store in downtown Milwaukee. On to further schooling, the Navy, Viet Nam and finally the workforce, I was

"too busy" for a hobby.

I rediscovered stamps through the whimsical purchase of a subscription to *Linn's Stamp News* to help support the junior high school band. Thoroughly hooked on world wide collecting, membership in the APS (1996), Orange County Philatelic Society (1997) and ISWSC (#2126) followed.

Funny thing is I've never thought of myself as a "joiner". I am enthusiastic about stamp collecting. I tell my tolerant family that I will be done

when I have JUST one of everything.

Finally, when the call came for a volunteer for the VP position I thought there might be a chance to work with people and something I love, the stamp hobby. I know little about the job right now but I will give it my best effort to help the ISWSC promote worldwide stamp collecting with youth and adult groups. Thank you for the opportunity to serve as VP for Charitable Programs.



## Book Review

by Joseph E. Foley (#308)

*Linn's Focus on Forgeries, A Guide to Forgeries of Common Stamps*, 2nd ed., by Varo E. Tyler, *Linn's Stamp News*, Box 29, Sidney, OH 45365, 2000, 330 + xiv pages, 9 x 6", soft cover, perfect bound, illustrations, index, \$20.00, ISBN 0-940403-88-9 (hardbound ed. \$35.00).

**O**ne thing most worldwide collectors enjoy is buying an old collection and merging it into our own albums. One thing we frequently *don't* enjoy is separating the wheat from the chaff. Many of those old time collections, and even some relatively modern ones, contain forgeries. For readers of *Linn's Stamp News*, Varo Tyler's fortnightly column has made it clear that forgeries are by no means limited to expensive stamps.

Clippings of this column quickly become unwieldy and to have the information in book form is a great convenience. In 1993, 150 of these columns were presented in book form. This new edition includes those 150 and an additional 171 items.

The presentation of information is succinct and easy to follow. In just about all cases an enlarged distinguishing detail from both

genuine and forged stamp is provided.

The quality of the illustrations is excellent. While it might be just esthetics of high quality coated paper vs. newsprint, the illustrations seem to be clearer than those in the regular column in *Linn's*. The stamps are arranged by country and secondarily more or less in the order found in the *Scott* catalog. However, there are also a number of *non-Scott* items such as locals. In addition to a table of contents, there is a rigorous index.

The introduction is a good primer on the subject and explains the rationale for forging "low-to-medium-priced stamps" in general terms. "Common" is a somewhat subjective term and some might consider at least a few of the stamps included in this book to be above that descriptor. This is a very minor point.

Incidentally, another *Linn's* publication very useful to worldwide collectors is *Linn's Stamp Identifier*. Over the years, there have been a number of publications of this type. This is by far the best I have seen. The 144-page soft-cover book is still in print and available at \$9.95.

## Nominees Needed!

by Tom Fortunato (#379)

**T**his coming fall's election has several key positions up for grabs. All terms run from Jan. 2002 through Dec. 2003.

President Tony Zollo and Secretary Dalene Thomas have served their maximum four-year (two consecutive election) terms. Also to be elected is the position of VP-Charitable Services.

The ISWSC is a totally volunteer organization, and only works through the efforts of its many members who donate their time and talents. Won't you consider running for office?

If you are interested in any of the three slots, first contact the current officer holding the position. He or she will give you details of what is expected in that role.

Potential candidates must contact President Tony Zollo by June 30 to be placed on the ballot scheduled for the September/October issue.

This is your chance to make a difference and guide the society through the next two years!



# ISWSC Meeting at Stampshow 2001

All ISWSC members are invited to attend a national meeting to be held on Sat., Aug. 25, during Stampshow 2001 in Chicago. The time is yet to be determined.

Stampshow is sponsored by the American Philatelic Society and is the largest annual show in the US.

More details will appear in the next *Circuit* issue.

New Members		New/Changed Email Addresses	
2306	Exp 03/04	1449	Jenkins
Victor P. Obninsky		1461	Piper
6 Mateo Drive		1462	Wong
Tiburon, CA 94920-1046		1470	Girard
Email: ltopobninsky@cs.com		1625	McLaughlin
A, C, Adv, Yrs(48), DD, 8, Lan (Fr, Ger),		1650	Bertoni
will translate, non-exchanger		1658	Emeka SJ
2307	Exp 03/02	1684	Blackburn
Walter J. Niedzielak		1729	Brena
1100 Forest Tr		1743	Kee
Cedar Park, TX 78613-3458		1748	Bertrand
Email: walt Niedzielak@webtv.net		1800	McNelly
A, F, Top (watercraft, lighthouses),		1801	Hovish
Beg, Yrs(1), EE, 7 (Oceania, Ber)		1815	Belanger
2308	Exp 03/02	1822	Engman
Charles H. Smith		1842	Toussaint
13910 B Rio Hondo Cir		1859	Callanan
La Mirada, CA 90638-3225		2109	Weatherford
Email: smithplg@aol.com		2116	Ludwikowski
A, F, Adv, Yrs(50), EE, 10 (airmail)		2122	Bourne
registration labels)		2124	Bullen
2309	Exp 03/02	2127	Form
Harvey Newport		2136	Blackmun
1405 Edgcombe Dr		2148	Smith
Sitka, AK 99835-7031		2162	Barile
Email: ocowboy@ptialaska.net		2212	Mueller
A, F, DD, 1-4-8 (US), 7		2213	Casey
2310	Exp 03/02	2216	Pittman, Jr.
Thomas S. Pollard		2217	Almerini
3445 S Downing St Apt 318		2220	Wilson
Englewood, CO 80110-2903		2221	Zarzynski
B (to 1940), D, Int, Yrs(52), DD, 7		2225	Bottman
2311	Exp 03/02	2226	Derks
Dale E. Harris		2228	Mossburg
212 Schofield Dr		2230	Valle
Reedsport, OR 97467-1366			
Email: harrisda@ohsu.edu			
A, F, Int, Yrs(6), DD, 7 (Port & cols)			
2312	Exp 03/02		
Prof. M S Narayanan			
Srivignesh F-B4/New 7,			
Old 4/str #42, Nanganallur			
Chennai, TN 600 061 India			
Email: narayanms@hotmail.com			
A, F, Beg, Yrs(2), DD, 1, 2, 3, 6, 8, Lang (Tamil, Rus,			
Hindi, Sanskrit), Trans(Y)			
2313	Exp 03/04		
M Denis			
PO Box 2579			
Bridgeview, IL 60455-2579			
B (to 1960), F, Adv(40), DD, 4-6 (US),			
7 (Ger & states, Aust, Bel, Cze, Pol, Gre,			
GB, Rom, Rus, Hun)			
2314-U	Exp 03/02		
Dr. John J. Hajdu			
Email: jjh46@home.com			
A, G, Adv, Yrs(20), DD, 7 (Hun, Can, Lie),			
Lan (Fr, Hun) will translate			
2315-Y	Exp 03/02		
Austin Stout			
114 Araahoe Dr			
Montgomery, TX 77316-6103			
Email: webmaster@jpastamps.org			
A, G, Adv, Yrs(20), DD, 7 (Hun, Can, Lie),			
Lan (Fr, Hun) will translate			
2316	Exp 03/02		
Roger Alderson			
2984 Rounsevel Ter			
Laguna Beach, CA 92651-2987			
Email: romarlag@aol.com			
A, G, Int, Yrs(10), DD, 1-2 (US), 7 (GB, Ger, Jap)			
2317	Exp 03/02		
Mitchell Feinstein			
12699 Promontory Rd			
Los Angeles, CA 90049-1186			
Email: mitchfin@ni.net			
Int, Yrs(5), DD, 7 (Rus), 10 (US mint)			
Temporarily Away, Contact HQ			
991- Ricker			
1149- Stater			
Address Changes/Corrections			
821- Vickers			
2618 Laurie Dr			
Missoula, MT 59804-1107			
1056- Easton postal code: V6B 4N7			
1508- Kaye			
PO Box 10264			
New Brunswick, NJ 08906			
1568- Muniz			
486 Tara Dr			
Banner Elk, NC 28604-8539			

## Resigned

173- Erickson deceased

294- Diserio no longer collecting

1825- Southern deceased

Dropped—Dues Expired in January

42 Allison

62 Hotchner

64 Rosow

74 Gardner

189 Burt

204 Stanley

228 Schwartz

254 Dykstra

320 Bourlier

322 Lewis

353 Strawn

386 Leer

428 Cox

447 Valencia

475 Nelsson

716 Schaubroeck

817 Kuhn

858 Zhirnov

1011 Rose

1020 Smith

1042 Chisolm

1093 Weise Jr

1174 Gerwitz

1247 Weeks

1300 Whinnery

1306 Holt

1311 Sanchez

1357 Rozario

1368 Reyes

## ADVERTISING

### Classified Rates per insertion:

First 30 words, including name, address, and zip code are \$3. Additional words are 20¢ for \$1. NOTE: State abbreviations = one word. "PO Box 12345" = two words. Zip code = one word. Make all checks payable to ISWSC in U.S. funds. Send text and payment for ads to the Editor. All addresses can be found on page 2.

—Send ads and payment (made out to ISWSC) to the Editor, Jennifer Arnold; her address is on P. 2.—

CLASSICS from the past and exceptional recent values, I'm a collector also, so you can expect real stamps from real countries. Every selection is an adventure; expect the unusual. Your want list requests are welcome. Jerome Gunderson (#2274), PO Box 75, Elgin IL 60123 (7-8/01)

WANTED — MAHATMA GANDHI-used/mnh stamps, M/S, S/S, FDCs, commercially-used covers, cachets, cancellations, specimen, colour trials and any related philatelic material. Manohar Balwant Kawali (#2207), "Kawali House" 384, Yadaw Patil Wadi, Veer Savarkar Marg, Prabhadevi, MUMBAI 400 025, INDIA (5-6/02)

## Where to Send What

### MEMBERSHIP RENEWALS, APPLICATIONS, CHANGES IN MAILING ADDRESS ETC.

Anthony Zollo, MD (#856) PO Box 150407  
Lufkin, TX 75915-0407 zolloam@lcc.net

### ANNUAL 250-STAMP DONATIONS

Mike Crump (#2126) PO Box 57  
Yorba Linda, CA 92885-0057 StampGuy47@aol.com

### PAYMENTS FOR ADVERTISEMENTS

Jennifer Arnold 310 NW Juniper Lane  
Albany OR 97321-1430 541•967-7043;  
Fax 541•967-9515 pizzazz@cmug.com

### ROSTER CHANGES

Tom Fortunato (#379) 42 Maynard St.  
Rochester NY 14615-2022  
stamptmf@frontiernet.net

### AUCTION BIDS & LOTS & PAYMENTS

Everett King (#1389) PO Box 127  
Whitethorn CA 94586 stamps@whitethorn.com

### TEXTS FOR ADS, ARTICLES FOR *THE CIRCUIT*, CORRECTIONS OF ARTICLES

Send to Jennifer Arnold (see above). Format of choice: Email direct to pizzazz@cmug.com with attachment in MS Word or PageMaker if possible. Send graphics or any other printed matter via U.S. Postal Services, unless you have the ability to email a jpeg of your graphics.

### 2001—Upcoming Stamp and Coin Expos:

May 9-11, COLOPEX 2001: A Stamp Odyssey, Greater Columbus Convention Center, 400 N. High St., Columbus, OH 43215

May 11-13, Pasadena Convention Center

May 18-20, International Stamp Collectors' Society, St. Nicholas Community Center, Encino, CA

May 25-27, VEGASPEX, Tropicana Hotel, Las Vegas

June 22-24, Glendale Civic Auditorium

June 29-30, July 1, Anaheim Brookhurst Center

August 3-5, International Stamp Collectors' Society, St. Nicholas Community Center, Encino, CA

Fall 2001, watch for River Palms Hotel Expo, Laughlin, NV

September 21-23, Glendale Civic Auditorium

October 26-28, International Stamp Collectors' Society, St. Nicholas Community Center, Encino, CA

November 23-25, Pasadena Convention Center

December 7-9, Glendale Civic Auditorium

December 14-16, VEGASPEX, Tropicana Hotel, Las Vegas

**For Bourse applications and information on times and on how to find exhibits, contact:**  
**Blick International,**  
**Israel I. Blick, Exec. Director,**  
**P O Box 854,**  
**Van Nuys, CA 91408 (Est. 1955)**  
**ilblick@aol.com; Internet: www.blick.net**